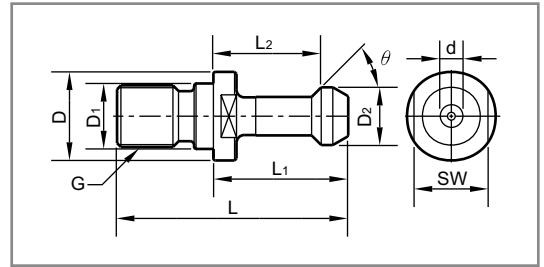


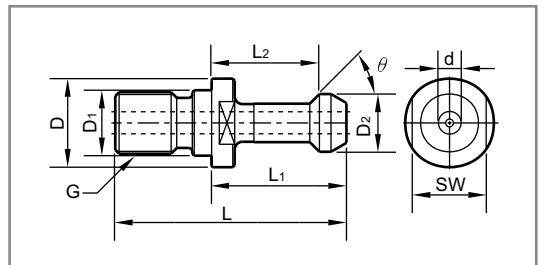
## MAS P30/40/50



Ordering Code	Type of Pull Stud	L	L1	L2	D	D1	D2	$\theta$	G	SW
330000-100	P30T-1	43	23	18	16.5	12.5	11	45°	M12	13
-200	-2							60°		
340000-100	P40T-1	60	35	28	23	17	15	45°	M16	19
-200	-2							60°		
-300	-3							90°		
350000-100	P50T-1	85	45	35	38	25	23	45°	M24	30
-200	-2							60°		
-300	-3							90°		

## MAS P40/50

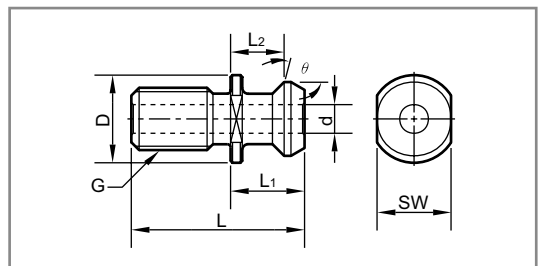
- With coolant hole.



Ordering Code	Type of Pull Stud	L	L1	L2	D	D1	$\theta$	G	d	SW
340000-144	P40T-1H	60	35	28	23	17	45°	M16	4	19
-244	-2H						60°			
-344	-3H						90°			
350000-145	P50T-1H	85	45	35	38	25	45°	M24	5	30
-245	-2H						60°			
-345	-3H						90°			

## ANSI B5.50

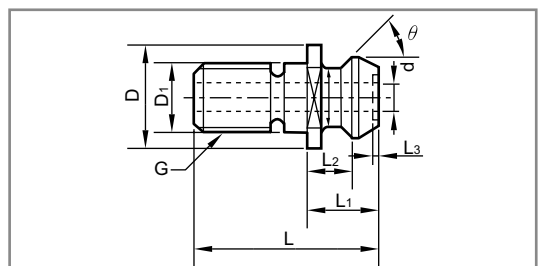
- ANSI/ASME B5.50-1985.
- For V-flange tool shanks for machining center with automatic tool changer.



Ordering Code	Type of Pull Stud	L	L1	L2	D	d	$\theta$	G	SW
341000-501	ANSI B5.50-40	38.1	16.256	11.176	23.876	7.1	45°	5/8-11UNC	31.75
351000-501	-50	58.4	25.4	17.78	36.5	11.9	45°	1"-8UNC	19.05

## MAZAK PULL STUDS

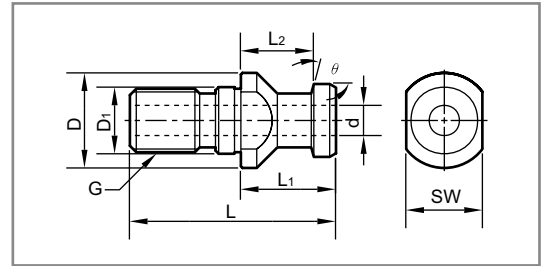
- With through hole for internal coolant.



Ordering Code	Type of Pull Stud	L	L1	L2	D	D1	d	$\theta$	G
340000-601	MAZAK-BT40	44.1	19.1	14	22	17	7	45°	M16
340000-621	-CAT40	44.1	16.1	11	22	17	7	45°	M16
350000-601	-BT50	65.2	25.2	17.58	37	25	10	45°	M24

## DIN 69872 Form A

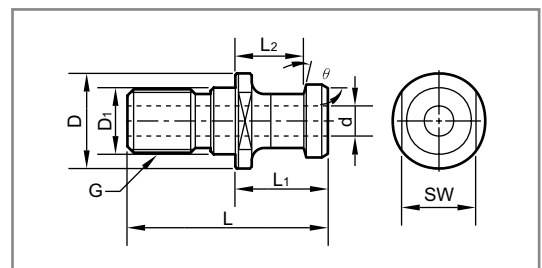
- With through hole for internal coolant.
- For DIN 69817 A tool holders.



Ordering Code	Type of Pull Stud	L	L1	L2	D	D1	d	$\theta$	G	SW
330000-404	DIN 69872-A30	44	24	19	17	13	-	15°	M12	14
340000-404	-A40	54	26	20	23	17	7.0	15°	M16	19
350000-404	-A50	74	34	25	36	25	11.5	15°	M24	30

## JIS B6339 P

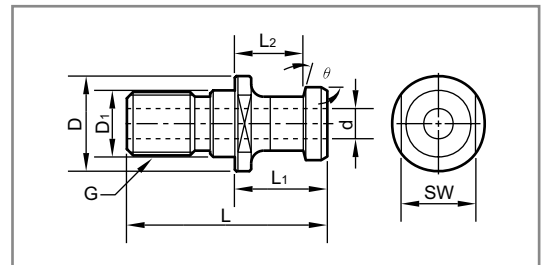
- For standard MAS BT tool holders, according to JIS B6339.
- With through hole for internal coolant.



Ordering Code	Type of Pull Stud	L	L1	L2	D	D1	d	$\theta$	G	SW
330000-401J	JIS B6339-30P	43	23.4	18.4	16.5	12.5	4	15°	M12	13
340000-401J	-40P	54	29	23	23	17	7	15°	M16	19
350000-401J	-50P	74	34	25	38	25	10	15°	M24	30

## JIS B6339 PA / ISO 7338 / 2-A

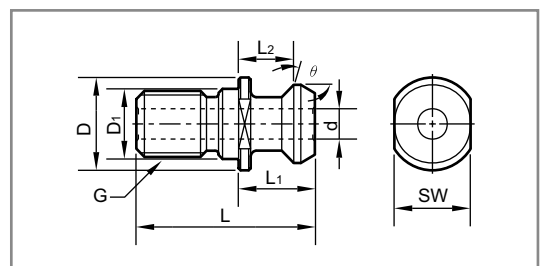
- According to JIS 6339-PA and same as ISO 7338 / 2-A and DIN69872 form A for DIN69871 form A tool holders.
- With through hole for internal coolant.



Ordering Code	Type of Pull Stud	L	L1	L2	D	D1	d	$\theta$	G	SW
340000-404J	JIS B6339-40PA	54	26	20	23	17	7	15°	M16	19
350000-404J	-50PA	74	34	25	36	25	11.5	15°	M24	30

## JIS B6339 PB / ISO 7338 / 2-B

- According to JIS 6339 PB and ISO 7338 / 2-B, for DIN69871 A tool holders.
- With through hole for internal coolant.



Ordering Code	Type of Pull Stud	L	L1	L2	D	D1	d	$\theta$	G	SW
340000-403J	JIS B6339-40PB	44.5	16.4	11.15	22.5	17	7.35	45°	M16	18
350000-403J	-50PB	65.5	25.55	17.95	37	25	11.55	45°	M24	30